

Letter No: F/440 / 544 / BSCL .

Date: 23/07/2021.

## **CORRIGENDUM - 1**

**Work Descriptions:** Request for Proposal (RFP) for Installation and Commissioning of Automated Multilevel Car Parking System at 4 (four) locations in Bhagalpur, Bihar under Smart City Mission on EPC Contract.

**NIT No. -** BSCL/Multilevel Car Parking/2021/66 dated 07/07/2021.

Tender ID: 11405

This is with reference to the above tender which was published in various newspapers and the same was uploaded on [www.eproc2.bihar.gov.in](http://www.eproc2.bihar.gov.in) and [www.smartcitybhagpur.org](http://www.smartcitybhagpur.org). It has to be noted that the response to prebid queries is being uploaded and published on <https://www.eproc2.bihar.gov.in> and <http://www.smartcitybhagpur.org> with this corrigendum as annexure - 1.

The other terms and conditions mentioned in NIT No. BSCL/Multilevel Car Parking/2021/66 dated 07/07/2021 and RFP remain unchanged.

**Note:** NIT, RFP, Corrigendum (if any) etc. are also available on Company website <http://www.smartcitybhagpur.org> for reference purposes only.

  
**Managing Director,**  
Bhagalpur Smart City Limited.

## Annexure - 1

**Bhagalpur Smart City Limited**

Prebid queries response for Installation and Commissioning of Automated Multilevel Car Parking System at 4 (four) locations in Bhagalpur, Bihar under Smart City Mission on EPC Contract.  
NIT No. - BSCL/Multilevel Car Parking/2021/66

Sr. No.	RFP Page No.	Clause No.	Description as per RFP	Queries / Suggestions	Clarification
1		Request for Proposal (RFP)	Providing, fitting installing and commissioning & Five Year Operation & Maintenance Contract of Multi Level Multi Grid Over-Ground Puzzle Parking System with Electro Mechanical Technology for accommodating 50 Cars with car Carrying Capacity of 2000 kg each and Car Dimension of 5000 mm length x 2000 mm height x 2100 mm width (SUV) in ground floor, 5000 mm length x 1800 mm height x 2100 mm width in 1st floor to above with average retrieval/parking time not more than 300 seconds with suitable motors for proper operation of Parking System, Brakes, Emergency stop switch, Photo sensors, Final Limit Switch, Pallet Stopper, DG Set, Car Parking Management System Boom Barrier + RFID, Cladding / Covering system from all sides including ACP on top etc. complete in all respect with one year Defect Liability Period including O & M five years (including 1 year defect liability period)	The estimated cost seems very low including Operation and Maintenance. As far as our experience is concerned with various smart cities (Jabalpur Smart City, Udaipur Smart City, Hubballi Dharward Smart City etc.), this estimated cost can be suitable for SITC only. IT is not possible to execute the project on estimated cost of Rs.21,93,60,000.00/- (Twenty one Crores Ninety three Lakhs sixty thousand) only with Five Year Operation & Maintenance Contract. Kindly review estimated cost and revise it.	As per RFP.
2	7	Request for Proposal (RFP) Clause 1 (b) Scope of Work	20. ALL STATUTORY APPROVALS	All the statutory approvals from various Departments shall be in the scope of ownership of the land belongs to the department. The contractor can not apply for any kind of NOC. All the site locations should be free from any litigation and encumbrances free.	As per RFP however, NOC of land shall be taken by Authority to ensure that all sites are free from litigation and encumbrances.
3	226 to 228	List of approved Makes - ELECTRICAL ITEMS:	L. T. Power, control and signal cable - HAVELLS / POLYCAB / CRYSTAL Copp'r Wire - MESCAB / FINOLEX / HAVELLS Wall/ Ceiling / Exhaust Fans - USHA / CROMPTON / HAVELLS Fan - Havells, Crompton, Bajaj LED Lights - Havells, Crompton, Bajaj, Surya	For mentioned Items- Make "RR Kabel" may please be approved.	As per RFP.
4	84	ARTICLE 9 UTILITIES AND TREES	The Authority shall assist informally the Contractor in obtaining the Applicable Permits for felling of trees to be identified by the Authority for this purpose if and only if such trees cause a Material Adverse Effect on the construction of the Project. The cost of such felling and of the compensatory plantation of trees, if any, shall be borne by the Selected Bidder.	The cost of such felling and of the compensatory plantation of trees, if any, shall be borne by Department.	As per RFP.

Sr. No.	RFP Page No.	Clause No.	Description as per RFP	Queries / Suggestions	Clarification
5	22	4. Qualification of the Bidder (4.3)	The contractor/firm must have satisfactory completed as a prime contractor at least one similar work of value 25[Twenty Five]% of estimated bid amount equal to Rs. 5,48,40,000/-(Five Crore forty eighty Lakh forty thousand) during last five completed financial years between 2015-16 and 2019-20 (work of 90% or more of contract value executed will be taken as completed work).	As per CPWD Norms the qualification criteria should be Three (03) similar works each costing not less than for 40% of the estimated cost put to tender or car parking system for such work should not be less than 40% in nos. or Two (02) similar works each costing not less than for 60% of the estimated cost put to tender or car parking system for such work should not be less than 60% in nos. or One (01) similar works costing not less than for 80% of the estimated cost put to tender or car parking system for such work should not be less than 80% in nos.	As per RFP.
6	22	4. 4.3. e	Experience in similar works means: - works of Design, Manufacturing, supply, installation, testing and commissioning of multilevel electro mechanical car parking of minimum 3 or more stories.  Or  The firm should have completed at least one work of 3 years continuous omprehensive maintenance and operation of multilevel electro mechanical car parking of minimum 3 or more stories.	Ammended as below: Experience in similar works means: - works of Design, Manufacturing, supply, installation, testing and commissioning of multilevel electro mechanical car (four wheeler) and bike (two wheeler) parking of minimum 3 or more stories.  Or  The firm should have completed at least one work of 3 years continuous omprehensive maintenance and operation of multilevel electro mechanical car (four wheeler) and bike (two wheeler) parking of minimum 3 or more stories.	Accepted.
7	13		Drawings & Design	Kindly provide us the drawing in Autocad Format to enable us to prepare layout and check feasibilty of putting the system accordingly	Drawings are enclosed as annexure - 2.

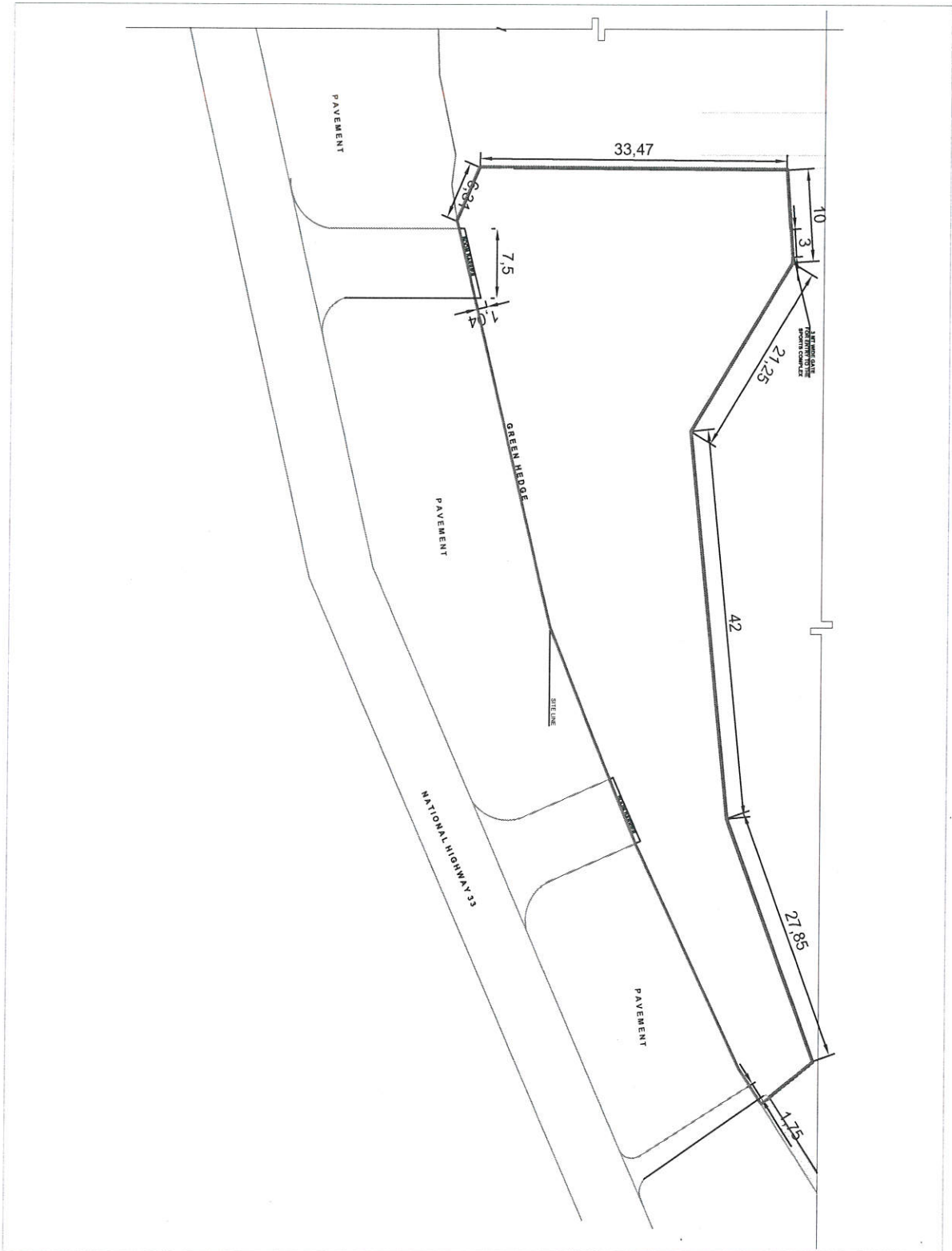
Sd/-  
**Managing Director,**  
Bhagalpur Smart City Limited

## Annexure-2



Adjoining collectorate Building





Sandy's Compound

